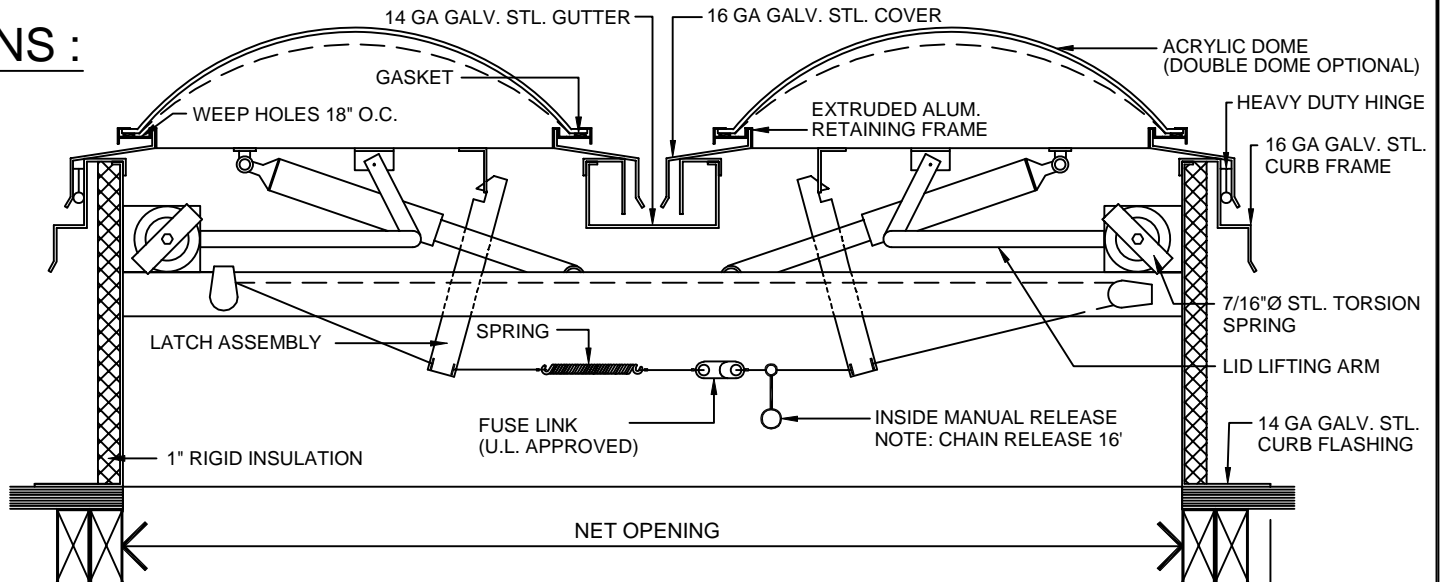


SPECIFICATIONS :

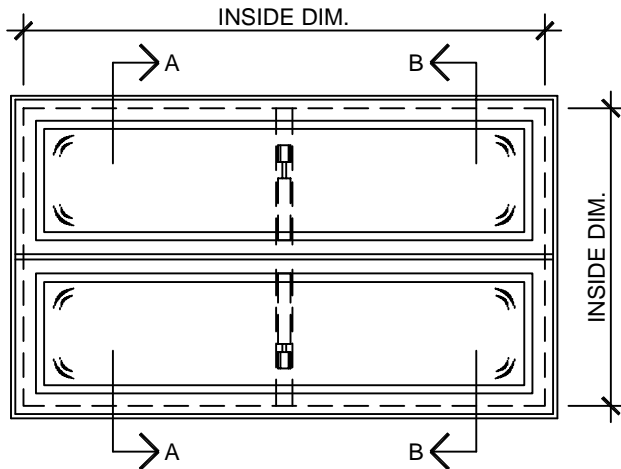
UNIT SHALL BE CONSTRUCTED WITH ALL JOINTS AND SEAMS CUT TO MATCH FIT AND COMPLETELY WELDED TO INSURE MAXIMUM STRENGTH AND WATER TIGHTNESS. ACRYLIC PLASTIC OF A THICKNESS AND CONFIGURATION TO SUPPORT LIVE LOAD REQUIREMENTS OF THE UNIFORM BUILDING CODE. UNIT SHALL BE FACTORY PRIME PAINTED AND SUPPLIED TO JOB SITE COMPLETE AND READY FOR INSTALLATION.

THIS DOUBLE DOOR HEAVY DUTY SMOKE VENT HAS BEEN TESTED TO MEET THE STRINGENT REQUIREMENTS OF UBC 15-7. THE DOORS WILL OPEN AGAINST A 10PSF SNOW LOAD.



SECTION VIEW
NOT TO SCALE

FLANGE ON WIDTH 4"
FLANGE ON LENGTH 2-3/4"



PLAN VIEW- SVD -10
NOT TO SCALE

- MODEL : SVD-10-
- NET OPENING :
- UNITS REQUIRED :
- FUSE LINK :
- DOMES COLOR :
- FINISH :

Lane-Aire MANUFACTURING CORP.

2820 El Presidio Street, Carson, California 90749
(323) 636-2324 - FAX (310) 604-3395

JOB	SHEET
ARCH.	
CONTR.	DWG. NO.
SUB. CONTR.	
DRAWN BY -	DATE: